



WE ARE BUILDING A BETTER HARVEY

Integrity . Unity . Pride

**Christopher J. Clark, Mayor
CITY OF HARVEY**

REQUEST FOR PROPOSALS

**Bid Number: 2022-04-01E
for
Critical Sinkhole Repairs**

BID NUMBER:	2022-04-01E
BID ISSUE DATE:	Wednesday, April 26, 2022
BID DUE:	Tuesday, May 10, 2022, by 5:00pm (CST)
BID OPENING DATE:	Wednesday, May 11, 2022, by 10:00am (CST)
AWARD OF BID:	The City anticipates awarding the contract in May

REQUEST FOR PROPOSALS

Critical Sinkhole Repairs

CITY OF HARVEY

This Request for Proposals (“RFP”) is being issued by the City of Harvey (“City”), acting pursuant to the City’s charter. This RFP is being issued as part of the City’s Emergency Procurement procedure to repair sinkholes throughout the City of Harvey. Funding for this project is from the City’s General Fund and is readily available for payment to the Contractor upon completion of the project. The RFP is specifically for the repairs of the sinkholes that are severe including any other structures causing the severity within the sinkholes located in **Appendix A**.

Description	Approximate Quantity
Hot Mix Asphalt Surface Course, Mix “D”, N50,1.5”	67 TONS
Pavement Patching, Type I, 6 inch	15 SY
Hot Mix Asphalt Binder Course, IL-19.0, N50,2.5”, 1 Lift	112 TONS
Bituminous Materials (Tack Coat)	79 GAL
Bituminous Materials (Prime Coat)	276 GAL
Pavement Full Depth Removal	30 SY
Preparation of Base	22 SY
Granular Backfill Structure	60 CY
Water Mains 12” DIP	600 LF
Manholes, Type A, 4’-Diameter, Type 1 frame	2 EA
Sawcut & Seal New Joints	372 LF
Earth Excavation	60 CY
Water Main 12” Removal	600 LF
Manhole Removal	2 EA
Mobilization	1 LSUM
Maintaining Traffic	1 LSUM

Bid Requirements:

Only complete proposals submitted by the deadline will be considered. A complete proposal to include the following:

1. Line Items for all elements of work necessary to perform the sinkhole repairs
2. Line Items for additional elements that may potentially be needed to perform the work
3. Unit Prices and Total Cost for all Line Items
4. Estimated time to complete the project

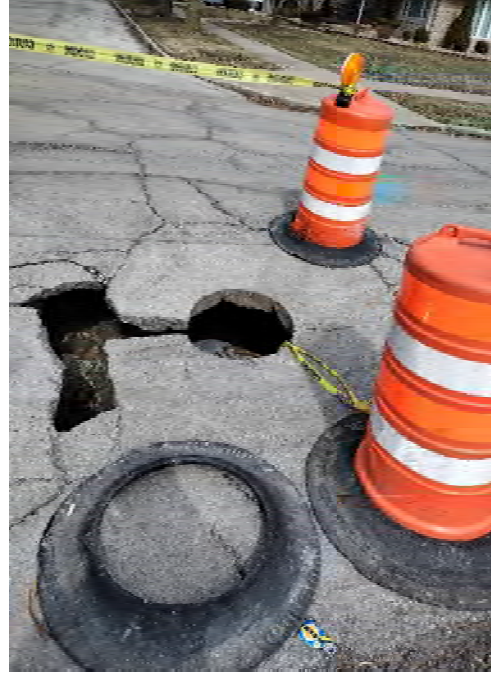
The City will accept proposals via email at procurement@anterogroup.com until Tuesday, May 11, 2022 by 5:00pm CST



APPENDIX A



1. Large Sinkhole - 146th and Peoria St.



2. Large Sinkhole - 150th and Marshfield Ave.



3. Large Sinkhole - 153rd and Myrtle Ave.



4. Large Sinkhole - 155th and Lexington Ave.



APPENDIX A (cont.)



5. Large Sinkhole - 156th and Lexington Ave.



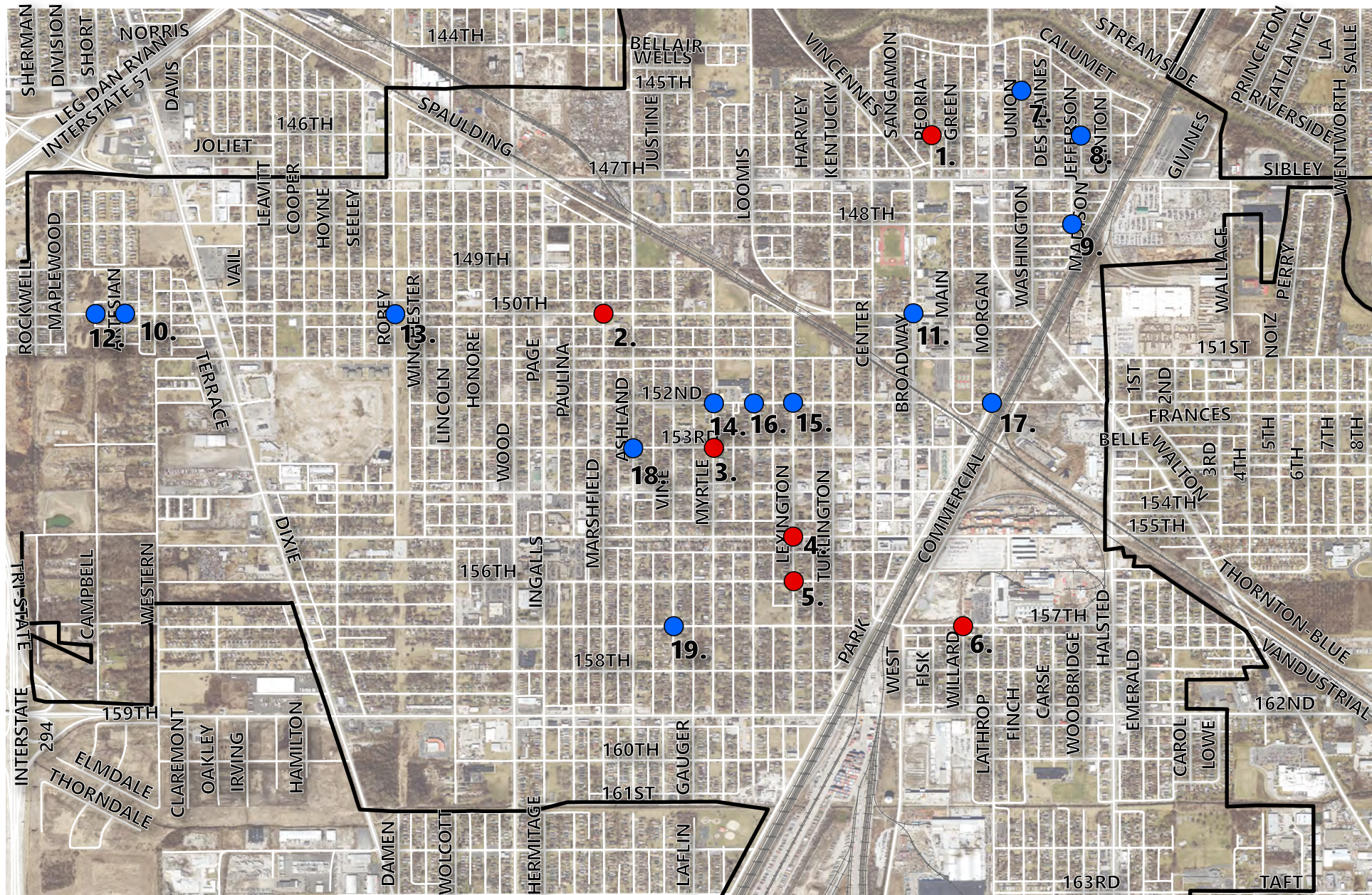
6. Large Sinkhole 157th near Willard Ave.



APPENDIX B

Sinkhole Locations-City of Harvey, Illinois		
	Location	Severity
1	146th & Peoria Street	Large-Sinkhole
2	150th & Marshfield Avenue	Large-Sinkhole
3	153rd & Myrtle Avenue	Large-Sinkhole
4	155th & Lexington Avenue	Large-Sinkhole
5	156th & Lexington Avenue	Large-Sinkhole
6	157th & Willard Avenue	Large-Sinkhole
7	145 th & Union Avenue	Sinkhole
8	146 th & Jefferson Avenue	Sinkhole
9	148 th & Madison Avenue	Sinkhole
10	150 th & Artesian Avenue	Sinkhole
11	150 th & Broadway Avenue	Sinkhole
12	150 th & Campbell Avenue	Sinkhole
13	150 th & Robey Avenue	Sinkhole
14	152 nd & Myrtle Avenue	Sinkhole
15	152 nd & Lexington Avenue	Sinkhole
16	152 nd & Loomis Avenue	Sinkhole
17	152 nd & Park Avenue	Sinkhole
18	153 rd & Ashland Avenue	Sinkhole
19	157 th & Vine Avenue	Sinkhole





City of Harvey

Sinkhole Map

Severity

● Large-Sinkhole

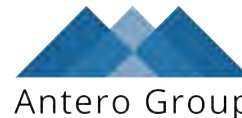
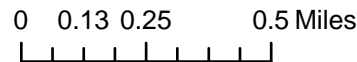
● Sinkhole

▬ Harvey City Limits

— Railroads

DISCLAIMER: Maps are for graphical purposes only. They do not represent a legal survey. While every effort has been made to ensure that these data are accurate and reliable within the City limits, the City of Harvey cannot assume liability for any damages caused by any errors or omissions in the data, nor as a result of the failure of the data to function on a particular system. The City makes no warranty, expressed or implied, nor does the fact of distribution constitute such a warranty.

Sources: Sinkhole Assessment Log (March 2022)



2022-Sinkhole Repairs

Item no.	Description	Unit	Quantity	Unit Price	Total
1	Maintaining Traffic	L SUM	1		
2	PAVEMENT PATCHING, TYPE I, 6 INCH	SQ YD	15		
3	REMOVE MANHOLES	EACH	2		
4	EARTH EXCAVATION	CU YD	60		
5	SAWCUT AND SEAL NEW JOINTS	LF	372		
6	PAVEMENT FULL DEPTH REMOVAL	SQ YD	30		
7	HOT MIX ASPHALT SURFACE COURSE, MIX "D", N50, 1.5" (IL-9.5mm)	TON	67		
8	HOT MIX ASPHALT BINDER COURSE, IL-19.0, N50, 2.5", 1 LIFT	TON	112		
9	BITUMINOUS MATERIALS (TACK COAT)	GAL	79		
10	BITUMINOUS MATERIALS (PRIME COAT)	GAL	276		
11	PREPARATION OF BASE	SQ YD	22		
12	GRANULAR BACKFILL STR	CU YD	60		
13	WATER MAIN REMOVAL 12"	LF	600		
14	MANHOLES, TYPE A, 4'-DIAMETER, TYPE 1 FRAME	EACH	2		
15	WATER MAIN 12" DIP	FOOT	600		
16	MOBILIZATION	L SUM	1		
				Grand Total	