



WE ARE BUILDING A BETTER HARVEY

Integrity . Unity . Pride

**Christopher J. Clark, Mayor
CITY OF HARVEY**

**REQUEST FOR QUALIFICATIONS ("RFQ")
FOR PROFESSIONAL ENGINEERING SERVICES**

STREETLIGHT IMPROVEMENT PROJECT

FIVE (5) HARD COPIES OF THE RESPONSE TO BE SUBMITTED

**RFQ#: 2025-08-01
August 12, 2025**

All responses shall be delivered to:
City of Harvey
Ms. Corean Davis, City Administrator
15320 Broadway Ave
Harvey, IL 60426

RESPONSES MUST BE RECEIVED NO LATER THAN 10:00 A.M. CDT, ON 08/29/2025

REQUEST FOR QUALIFICATIONS STREETLIGHT IMPROVEMENT PROJECT

The City of Harvey ("City") requests Statements of Qualification (SOQ) to provide streetlight installation services from contractors for the improvement of the streetlight system throughout the City. Qualifications submissions will be accepted until **10:00 A.M. CDT, 08/29/2025**. SOQ's received after that date and time will not be considered. SOQ's will be reviewed by the City of Harvey evaluation team.

All SOQ's hard copies shall be submitted in a sealed envelope and identified on the outside as:

CITY OF HARVEY, IL STREETLIGHT IMPROVEMENT PROJECT

SOQ's shall be delivered to the City of Harvey, at the City Hall at 15320 Broadway Avenue, Harvey, IL 60426. All SOQ's will be scored and ranked with the highest rated firm being awarded a contract.

Purpose

The purpose of this RFQ is to solicit SOQ's from qualified engineering contractors for streetlight restoration or installation services.

Project Overview

The City of Harvey received funding through the Bureau of Justice Assistance (BJA) to improve the City's streetlight system as part of a holistic effort to address safety concerns, reduce crime, and transform the appearance of its streetscapes. Key components of the project include an optimized selection of streetlight improvement locations and installation at the selected locations.

To address Harvey's real and perceived crime issues, the City of Harvey is introducing the Streetlight Improvement Project. In collaboration with a variety of partners, the City plans to implement strategies to tackle crime, which consists of a variety of community policing programs, policy initiatives, personnel changes, and infrastructure projects. The Streetlight Improvement Project will enable the City to turn on more than 600 streetlights that are not functioning properly. By repairing and replacing streetlights, safety will be improved throughout the City. Improved lighting deters offenders by increasing the risk that they will be seen or recognized when committing crimes, increasing police visibility, and encouraging residents to be more present in their yards or walk more at night, which can increase community surveillance.

This project will have a transformative impact for residents and business owners as streetlight outages create unnecessary hazards for drivers and pedestrians, with older residents and children especially vulnerable to hazards.

Scope of Work

The selected contractor(s) will be responsible for selecting and installing streetlight improvements in coordination with the City of Harvey and its representatives. The City has identified more than 600 streetlights that need repairs and intends to restore as many lights as possible within the scope of this project. **Exhibit A** shows a map of the existing known streetlights within the City boundaries and is divided as follows:

- Section A: Streetlights north of 151st Street within City Boundaries
- Section B: Streetlights south of 151st Street and north of 156th Street within City Boundaries
- Section C: Streetlights south of 156th Street within City Boundaries

The scope of work will include a determination of the most optimal streetlight improvements and locations; furnishing of labor, materials, and equipment; and installation work. The selected contractor shall propose the materials, equipment, and installation methods to the City and obtain approval prior to the start of construction work. All project work must be completed by November 28, 2025. The City Engineer and Public Works Department will provide oversight of the installations.

Insurance Requirements

The selected contractor shall provide at its own cost the following forms of insurance through the completion of the contract period:

- Commercial General Liability (CGL) coverage with limits of liability not less than \$1,000,000 per occurrence and not less than \$2,000,000 annual aggregate.
- Commercial Liability Umbrella coverage with limits of liability not less than \$2,000,000.
- Comprehensive Automobile Liability coverage with limits not less than \$1,000,000 per incident.
- Workers' Compensation and Employers' Liability.

The City of Harvey and its representatives shall be named as an additional insured on the policies required above. The selected contractor shall furnish certificates of insurance to the City and corresponding policy endorsement setting forth the required coverage herein prior to entering any project areas or commencing any work. Such policies shall contain an endorsement requiring the carrier to give at least ten days prior notice of cancellation to the City. All insurance required by this contract shall be primary and non-contributing to any insurance maintained by the City. This policy may not include any exclusion for IL Labor Laws, injury to employees or to subcontractors. Any subcontractors shall have an unmodified Commercial General Liability policy without limitation with respect to Employers Liability and injury to independent contractors. The contractor agrees to cause each subcontractor to furnish the City with copies of certificates of insurance and the corresponding policy endorsements setting forth the required coverage herein prior to any such contractor entering any project area or commencing any work.

Non-Collusion Certification

By submission of this response, each bidder and each person signing on behalf of any bidder certifies under penalty of perjury, that to the best of their knowledge and belief:

1. No attempt has been made or will be made by the bidder to induce any other person, partnership or corporation to submit or not to submit a bid for the purpose of restricting competition.

Statement of Qualifications Requirements

Qualifications should be submitted in hard copy format. Qualifications are to be limited to 12 single sided pages on standard 8 ½" x 11" letter size paper using 12-point font, excluding title sheet, resumes and project examples. Complete Qualifications shall include the following:

- **Cover Page:** A project cover page will outline the following elements.
 - **Project team**
 - **Project lead, with contact information**

- **Brief overview of previous similar experience**
- **Effort to meet Disadvantaged Business Enterprise requirements**
- **Contractor Team Overview:** Describe the project team members' firm, background, and project organization structure.
- **Relevant Work Experience:** Describe your team's experience relative to streetlight installation for similar projects. Include at least three examples.
- **Project Approach:** Outline the contractor(s)' project approach, including details about the following:
 - **Schedule**
 - **Design Approach**
 - **Any other project elements that may make your team's approach unique**
 - **Outline warranty of proposed products and performance**
- **References:** Please provide three professional references.
- **Fee Schedule:** Please provide standard fee schedule.
- **Insurance:** Confirm your team meets necessary insurance requirements.
- **Certification Statement (Optional):** In the interest of supporting local goals, additional consideration will be given for bids, which include a certification statement of any M/WBE proposed project participants.

Evaluation Criteria

The Evaluation Committee will review the submittals in accordance with the following criteria:

- Accurate and full understanding of the project scale, type, unique elements, and general approach to achieve the project goals. – (30%)
- Demonstrated success of proposed approach/methodology in past or current similar projects, including sub-contractors. – (30%)
- Availability and strength of committed personnel. – (20%)
- Organizational staffing plan to accomplish the goals and objectives of the project. – (15%)
- Commitment to meet the M/WBE goals. – (5%)

The Evaluation Team may choose to conduct interviews, oral presentations and/or seek clarification from selected Respondents. The City of Harvey will then contact the consulting firm the Evaluation Team finds most qualified for the project to negotiate the scope of services and contract fee. Should the first selected firm be unable to reach an agreement regarding the terms of a contract, the City of Harvey may enter into negotiations with another contractor/engineering firm of the top three (3) selected, and so on until an agreement is reached with a qualified firm. This will be a qualifications-based selection.

The City reserves the right to terminate this procurement at any stage if it is determined to be in the best interest of the City. In no event will the City be liable to Respondents for any cost or damages incurred by Respondents or other interested parties in connection with the procurement process, including but not limited to any and all costs of preparing responses to the RFQ and participation in any conferences, oral presentation or negotiations.

All responses submitted to the City are subject to the Freedom of Information Act. Respondent agrees not to pursue any cause of action against the City about disclosure of information.

Compliance with Laws

The selected firm agrees to be bound by all applicable Federal, State and Local laws, regulations and directives as they pertain to the performance of the contract.

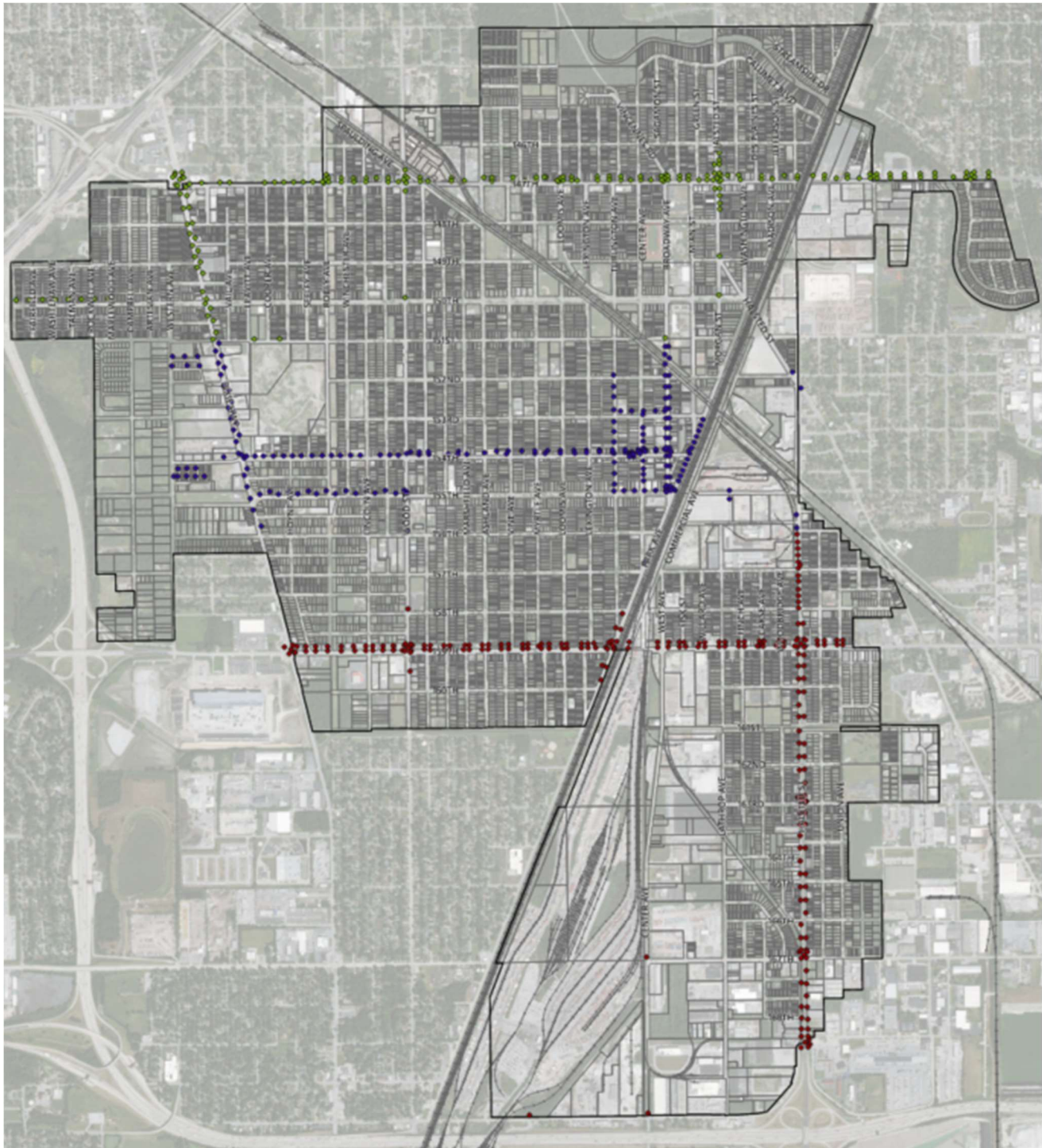
No City of Harvey elected official, officer, or employee who participates in the procurement, management, or administration of engineering services contracts or subcontracts has, directly or indirectly, any financial or other interest in connection with the proposed engineering contracts or subcontracts.

No person or entity performing services for the City of Harvey has, directly or indirectly, any financial or other interest in any real property to be acquired for the project.

Questions

Any questions concerning this request for qualifications should be addressed to Mr. Eric Neagu at (773) 403-5137 or eneagu@anterogroup.com and are due 08/20/2025 by 5:00 P.M. CDT. Statements of Qualifications should be delivered to the City of Harvey, at the City Hall at 15320 Broadway Ave, Harvey, IL 60426 by 08/29/2025 by 10:00 A.M. CDT. The bid opening will take place on 08/29/2025 at 10:01 A.M. CDT at City Hall.

APPENDIX A: HARVEY STREETLIGHT LOCATIONS



City of Harvey

- Railroads
- Parcels
- Municipal Boundary

Harvey Streetlights

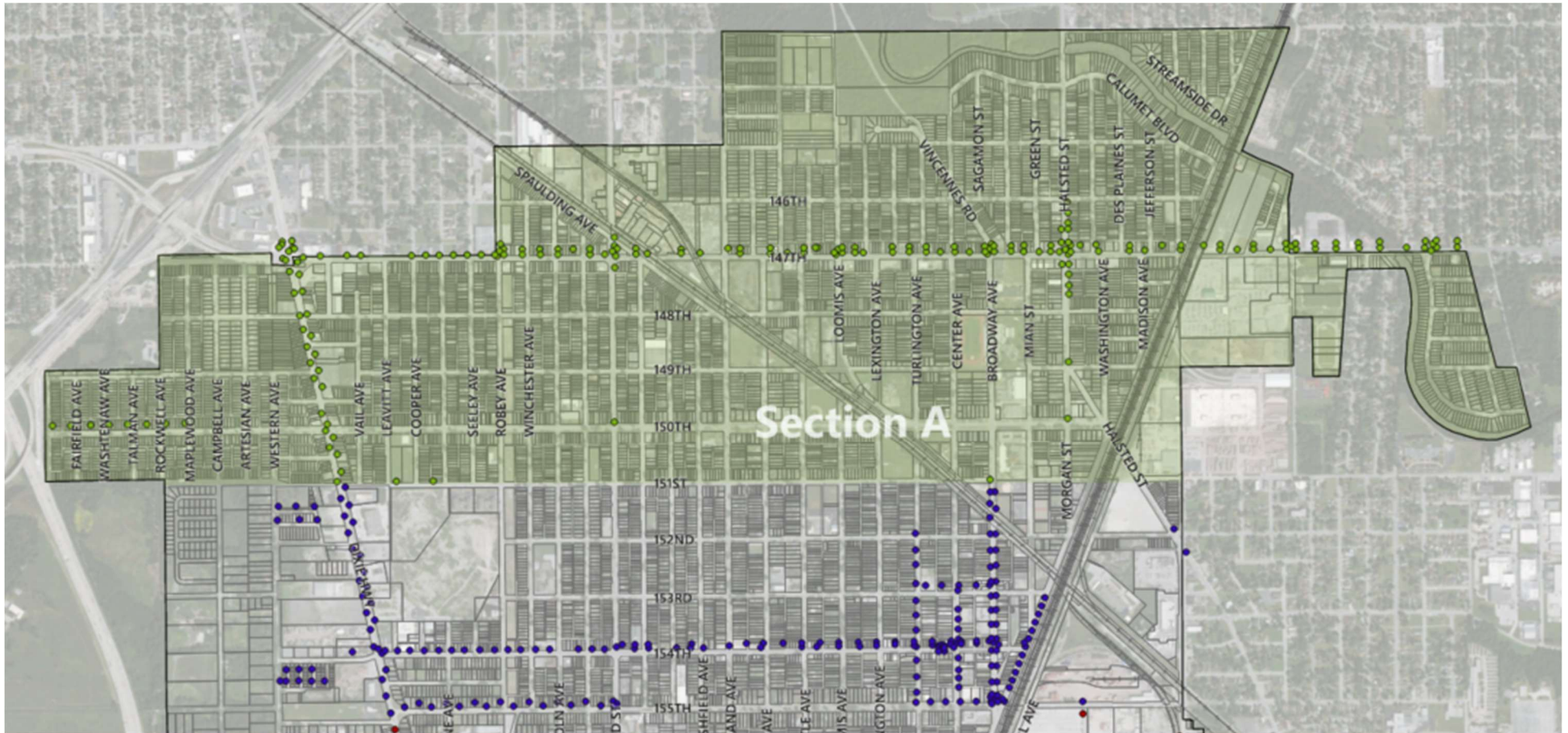
- Section A
- Section B
- Section C

DISCLAIMER: Maps are for graphical purposes only. They do not represent a legal survey. While every effort has been made to ensure that these data are accurate and reliable within the City limits, the City of Harvey cannot assume liability for any damages caused by any errors or omissions in the data, nor as a result of the failure of the data to function on a particular system. The City makes no warranty, expressed or implied, nor does the fact of distribution constitute such a warranty.

Sources: Cook County GIS 2021, M.E. Simpson, SSMMA

Date Created: 7/28/2025





City of Harvey

- Railroads
- Parcels
- Municipal Boundary

Harvey Streetlights

- Section A
- Section B
- Section C

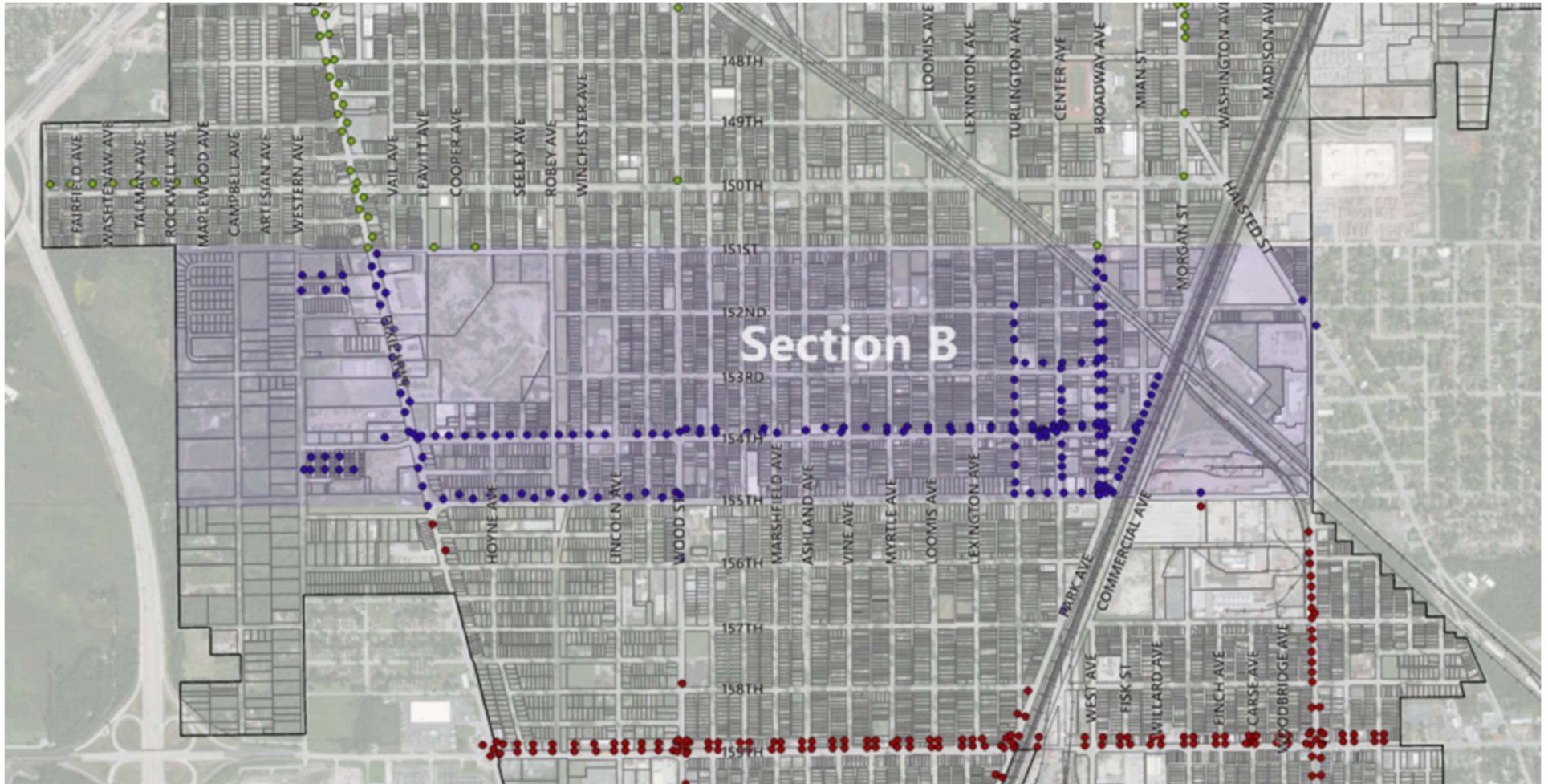


DISCLAIMER: Maps are for graphical purposes only. They do not represent a legal survey. While every effort has been made to ensure that these data are accurate and reliable within the City limits, the City of Harvey cannot assume liability for any damages caused by any errors or omissions in the data, nor as a result of the failure of the data to function on a particular system. The City makes no warranty, expressed or implied, nor does the fact of distribution constitute such a warranty.

Sources: Cook County GIS 2021, M.E. Simpson, SSMMA

Date Created: 7/28/2025





City of Harvey

- Railroads
- Parcels
- Municipal Boundary

Harvey Streetlights

- Section A
- Section B
- Section C

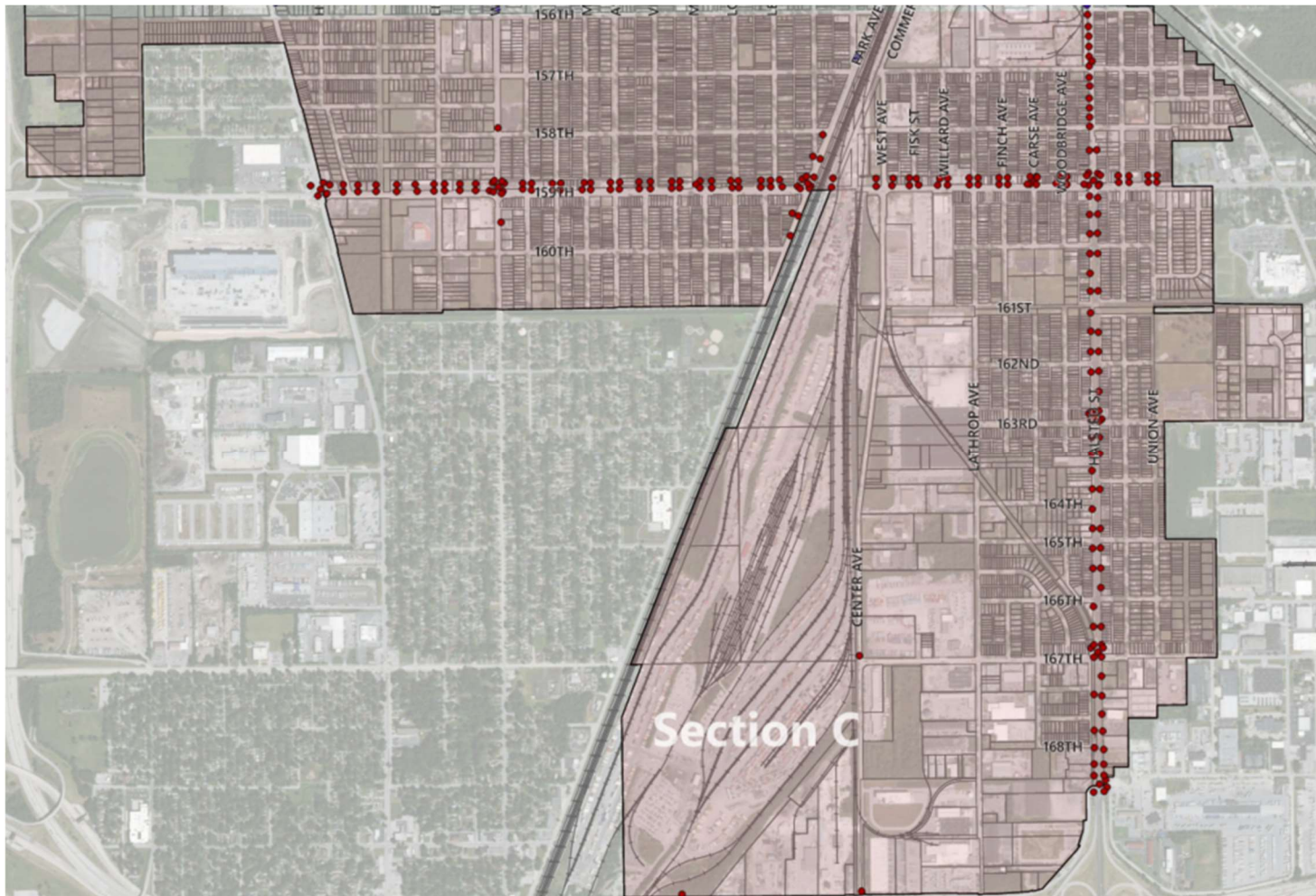


DISCLAIMER: Maps are for graphical purposes only. They do not represent a legal survey. While every effort has been made to ensure that these data are accurate and reliable within the City limits, the City of Harvey cannot assume liability for any damages caused by any errors or omissions in the data, nor as a result of the failure of the data to function on a particular system. The City makes no warranty, expressed or implied, nor does the fact of distribution constitute such a warranty.

Sources: Cook County GIS 2021, M.E. Simpson, SSMMA

Date Created: 7/28/2025





City of Harvey

- Railroads
- Parcels
- Municipal Boundary

Harvey Streetlights

- Section A
- Section B
- Section C



DISCLAIMER: Maps are for graphical purposes only. They do not represent a legal survey. While every effort has been made to ensure that these data are accurate and reliable within the City limits, the City of Harvey cannot assume liability for any damages caused by any errors or omissions in the data, nor as a result of the failure of the data to function on a particular system. The City makes no warranty, expressed or implied, nor does the fact of distribution constitute such a warranty.

Sources: Cook County GIS 2021, M.E. Simpson, SSMMA

Date Created: 7/28/2025

